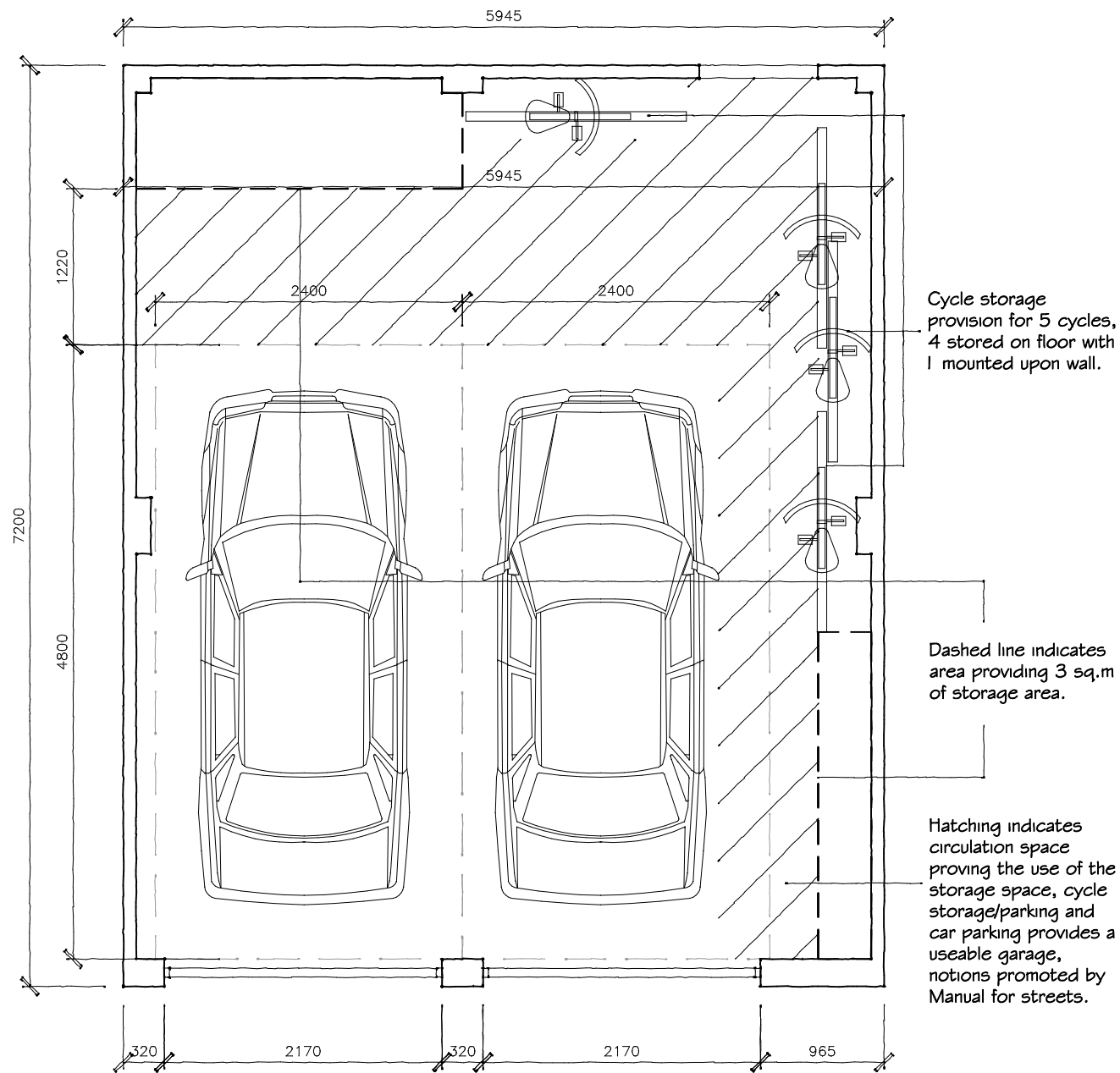




- Contractors must check all dimensions on site. Only figured dimensions are to be worked from. Discrepancies must be reported to the Architect or Engineer before proceeding. © This drawing is copyright



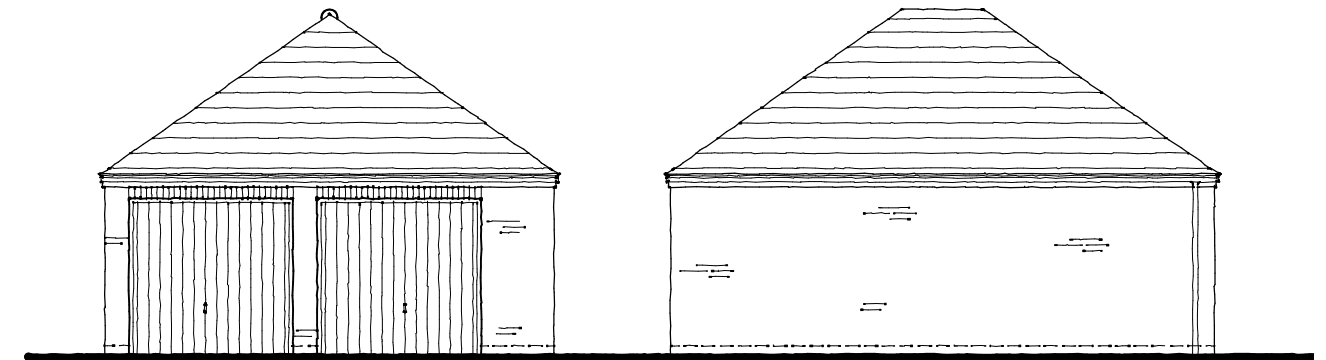
FLOOR PLAN 1:50

Note: The layout of the parking space, cycle storage, cycle parking and storage space are indicative only. They illustrate that the spaces can be achieved only, therefore, shelves and cycle fixings will be installed at the developers discretion.

The cycle storage achieves the necessary Local, County and National guidelines in terms of numerical provision and notions of ease of access, security and covering.

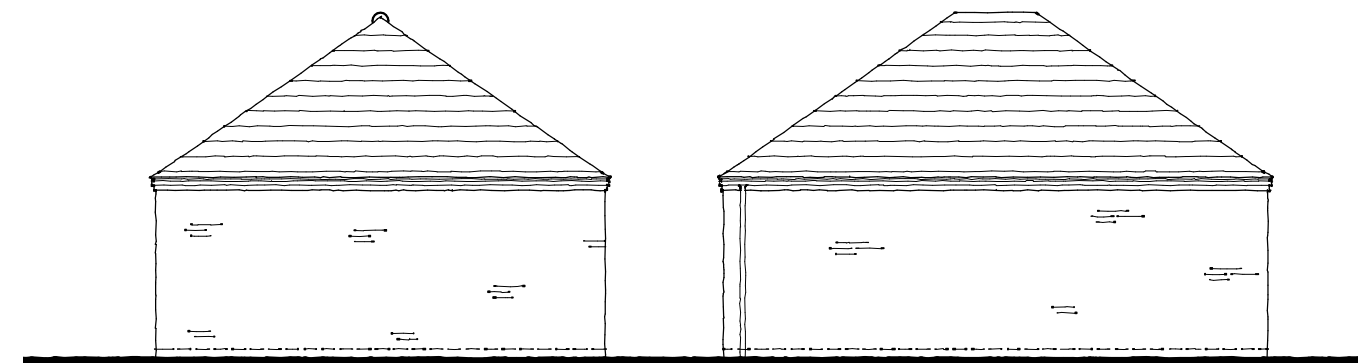
'Manual for Streets' recognises that cycles can be kept in garages or rear gardens, therefore, visitor cycle parking is to be accommodated in the rear gardens.

The cycle parking also achieves the necessary Local, County and National guidelines in terms of numerical provision and notions of ease of access and security.



FRONT ELEVATION 1:100

SIDE ELEVATION



REAR ELEVATION

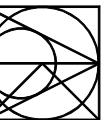
SIDE ELEVATION

PLOT - 1, 2 & 10

Revision	Description	Drawn	Checked	Date
Preliminary	Information	Tender	Construction	As Built



Woods Hardwick
Architects, Engineers and Development Consultants



15-17 Goldington Road
Bedford
MK40 3NH
United Kingdom
T. +44 (0)1234 268862
F. +44 (0)1234 353034
mail@woodshardwick.com
www.woodshardwick.com

Title **Land off Hillfoot Road
Shillington**

Details **Double Garage - Hipped Roof
Plan & Elevations**

Scale 1:50;1:100@A3 Date August '18 Drawn KJ Chk CM

17549/321

Please consider the environment before printing this drawing

1:100

